



## Some Issue Highlights...

Letter From The Head of School

Pages 1 & 2

Dates For Your Diary

Page 2

Important Exam News

Pages 3 - 6



Extra Curricular Activities

Page 7

*Celebrating*  
**SUCCESS** at Edmonton County School

Literacy News

Pages 8 - 11



Assemblies and Attendance

Page 12



## Letter from the Head of School

### Mr P Miller

Dear Parents and carers,

This week we welcomed students back to school after the October half-term break, so this is a good opportunity for some key reminders:

**Attendance and punctuality:** There is a very strong link between a child's attendance at school and the exam grades they achieve. Please help us secure the best possible progress for your child by ensuring they are in school, and on time to school. We expect at least 96% attendance for all students. Any student arriving after 8:25 is late to school and is likely to receive a 30 minute after-school detention that day. A reminder that the school will not give parents / carers permission to take their children out of school for family holidays during term time.

**Uniform:** Our full uniform policy is published on the school's website, but a couple of reminders as the weather becomes more autumnal:

- Students' coats, hats and scarves should be black or navy blue
- hoodies are not allowed in school
- students should always be wearing their blazers (except during PE activities), but can **also wear the optional school jumper under their blazer**

**Behaviour in the local community:** As part of the school's code of conduct, all students agreed to:

- Behave in a manner that shows respect for the community and for one another
- Treat members of the wider local community with respect and consideration.



This is particularly important around the A10 terrace of shops which are well-used by the local community. Students are expected to be respectful and show consideration to shopkeepers and their customers. Students should be leaving this area by 3:30pm (Years 7-10, 12 & 13) or 4:30pm (Year 11).

Additionally, we expect students to behave in a manner that shows respect for other passengers on public transport. Whilst the majority of students are behaving appropriately on the bus services that serve our two campuses, I was disappointed to hear from some bus drivers about anti-social behaviour by a small minority. Please support the school in reiterating our expectations – anti-social behaviour will not be tolerated in our school or anywhere in our local community.

**Important upcoming events are:**

- Thursday 10th November: Year 10 Curriculum Evening for parents
- Thursday 24th November: Year 11 Parents' Evening for parents

Our Weekly Newsletter aims to provide our school community with news, updates, important announcements and key dates. However, if you do have any questions, please contact the school via [info@edact.org.uk](mailto:info@edact.org.uk) in the first instance.

Thank you for your continued support.

**Paul Miller, Head of School**

### IMPORTANT EXAMINATION INFORMATION

Week Commencing 7th November

Date	Start	Len	Board	Component Code	Component Title	Level	Cands
Mon 7 Nov 2022	08:30	1:00	EDEXL/GCSE	1MA1 3F	GCSE Art - Day 1	GCSE/9FC	18

**Ms G Boniface**

Examinations Manager

[ecsexams@edact.org.uk](mailto:ecsexams@edact.org.uk)

020 8370 1924

### Dates For Your Diary

<b>Thursday 10th November</b>	Year 10 Curriculum Evening - <b>Bury/Cambridge Campus</b>
<b>Wednesday 16th November</b>	Enrichment Day 1 - <b>Bury/Cambridge Campus</b>
<b>Thursday 24th November</b>	Year 11 Parents Evening - <b>Cambridge Campus</b>
<b>W/C 5th December</b>	Pre-Public Examinations Three (Year 11) and Pre-Public Examinations 1 (Sixth Form)

**IMPORTANT EXAMINATION INFORMATION****Pre-Public Examinations Three (Year 11) and Pre-Public Examinations 1 (Sixth Form)**

Below is the timetable for Year 11 PPE3 and Sixth Form PPE1 examinations; copies of which will be found in the exams sections on the school website and will also be displayed around school. Individual Candidate Timetables will be sent to students and parents through In Touch, so students will need to check their emails.

Students will be attending lessons as normal when not sitting an exam.

**EXPECTATIONS FOR STUDENTS**

- Make sure you check the seating plans posted in the playground in case there is a change of room for your exam (line up in the playground at least 15 minutes before the start time)
- Bring all the equipment you will need for the exam [black pens, pencils, ruler, calculator (where allowed), protractor, compasses]
- Full school uniform/smart business wear needs to be worn, with IDs placed on the exam desk
- Make sure you understand the rules
- Mobile phones/ watches, or any other product with potential technological/web enabled sources of information must be switched off and put in bags. **Any student found with such a device on them in an exam room will face disqualification from that exam**
- Any pencil cases taken into the exam room must be see-through
- Only small water bottles will be allowed into the exam room and must have all labels removed

You must not take into the exam room:

- notes
- a calculator case/instruction leaflet

Listen to the invigilators and follow their instructions during the exam.

Good luck with your revision and the exams!

**Ms G Boniface**

**Examinations Manager**

[ecsexams@edact.org.uk](mailto:ecsexams@edact.org.uk)

020 8370 1924

**GOOD  
LUCK!**



Date	Start	Len	Component Title	Cands
Tue 22 Nov 22	08:30	all day	GCSE Art - Day 1	42
Tue 22 Nov 22	08:30	all day	GCSE Photography - Day 1	44
Wed 23 Nov 22	08:30	all day	GCSE Art - Day 2	42
Wed 23 Nov 22	08:30	all day	GCSE Photography - Day 2	44
Mon 5 Dec 22	08:30	01:30	App Gen Sci: Unit 1	7
Mon 5 Dec 22	08:30	02:00	GCSE Computer Science P1	35
Mon 5 Dec 22	08:30	01:00	GCSE French Writing F	6
Mon 5 Dec 22	08:30	01:00	GCSE French Writing H	19
Mon 5 Dec 22	08:30	02:00	GCSE History P1	40
Mon 5 Dec 22	08:30	01:45	GCSE Sociology P1/P2	61
Mon 5 Dec 22	08:30	01:25	GCSE Turkish Writing H	53
Mon 5 Dec 22	08:30	01:30	Hospitality & Catering Unit 1	43
Mon 5 Dec 22	08:30	02:00	Y12 English Literature	20
Mon 5 Dec 22	13:40	02:15	A Level History - Paper 1	5
Mon 5 Dec 22	13:40	02:00	A Level Physics - Paper 1	10
Mon 5 Dec 22	13:40	01:30	BTEC H&SC Unit 2 Y13	21
Mon 5 Dec 22	13:40	01:00	BTEC L2 ICT Unit 1	17
Mon 5 Dec 22	13:40	02:00	GCSE D&T Product Design	41
Mon 5 Dec 22	13:40	01:45	GCSE Drama Written Paper	43
Mon 5 Dec 22	13:40	01:00	GCSE French Writing F	10
Mon 5 Dec 22	13:40	01:00	GCSE French Writing H	19
Tue 6 Dec 22	08:30	02:00	A Level Maths: Pure	15
Tue 6 Dec 22	08:30	02:40	A Level Turkish Paper 1	8
Tue 6 Dec 22	08:30	01:30	AS Psychology Paper 1	23
Tue 6 Dec 22	08:30	03:00	BTEC Business U2 - Developing a Marketing Campaign	31
Tue 6 Dec 22	08:30	01:30	GCSE Geography P1	131
Tue 6 Dec 22	08:30	02:00	GCSE History P1	119
Tue 6 Dec 22	13:40	01:30	AS Chemistry - Paper 1	23
Tue 6 Dec 22	13:40	01:00	BTEC ICT Unit 1	10
Tue 6 Dec 22	13:40	01:45	GCSE Biology H	60
Tue 6 Dec 22	13:40	01:15	GCSE Comb Sci: Biology F	94
Tue 6 Dec 22	13:40	01:15	GCSE Comb Sci: Biology H	102
Wed 7 Dec 22	08:30	02:00	A Level Computer Science Paper 1	8
Wed 7 Dec 22	08:30	02:30	A Level French Listening Reading & Writing	5
Wed 7 Dec 22	08:30	02:15	A Level Geography - Paper 1	6
Wed 7 Dec 22	08:30	02:00	A Level Sociology - Paper 1	9
Wed 7 Dec 22	08:30	03:00	BTEC ICT Unit 2 Pt A	14
Wed 7 Dec 22	08:30	01:45	GCSE Religion & Life P1/P2	257

Date	Start	Len	Component Title	Cands
Wed 7 Dec 22	13:40	02:00	A Level Maths: Applied	15
Wed 7 Dec 22	13:40	02:45	A Level Turkish Paper 2	8
Wed 7 Dec 22	13:40	01:30	AS Biology - Paper 1	20
Wed 7 Dec 22	13:40	01:30	GCSE Maths Paper 1F	137
Wed 7 Dec 22	13:40	01:30	GCSE Maths Paper 1F (Sixth Form)	10
Wed 7 Dec 22	13:40	01:30	GCSE Maths Paper 1H	120
Thu 8 Dec 22	08:30	02:00	A Level Economics Paper 1	25
Thu 8 Dec 22	08:30	03:00	BTEC Business U6 - Principles of Management	12
Thu 8 Dec 22	08:30	01:45	GCSE English Literature	257
Thu 8 Dec 22	08:30	01:00	Sport - Unit 3	7
Thu 8 Dec 22	13:20	01:30	A Level Computer Science Paper 2	8
Thu 8 Dec 22	13:20	02:00	A Level French Writing	5
Thu 8 Dec 22	13:20	02:15	A Level Geography - Paper 2	6
Thu 8 Dec 22	13:20	02:00	A Level Sociology - Paper 2/3	9
Thu 8 Dec 22	13:20	02:00	BTEC ICT Unit 2 Pt B	14
Thu 8 Dec 22	13:20	01:00	BTEc Media L2	17
Fri 9 Dec 22	08:30	01:30	A Level History - Paper 2	5
Fri 9 Dec 22	08:30	02:00	A Level Physics - Paper 2	10
Fri 9 Dec 22	08:30	01:30	AS Biology - Paper 2	20
Fri 9 Dec 22	08:30	01:30	GCSE Maths Paper 2F	137
Fri 9 Dec 22	08:30	01:30	GCSE Maths Paper 2F (Sixth Form)	10
Fri 9 Dec 22	08:30	01:30	GCSE Maths Paper 2H	120
Fri 9 Dec 22	13:40	01:30	AS Chemistry - Paper 2	23
Fri 9 Dec 22	13:40	01:45	GCSE Chemistry H	60
Fri 9 Dec 22	13:40	01:15	GCSE Comb Sci: Chemistry F	94
Fri 9 Dec 22	13:40	01:15	GCSE Comb Sci: Chemistry H	102
Mon 12 Dec 22	08:30	02:30	A Level English Literature	9
Mon 12 Dec 22	08:30	01:30	BTEC H&SC Unit 1 Y12	21
Mon 12 Dec 22	08:30	01:45	GCSE Computer Science P2	35
Mon 12 Dec 22	08:30	00:45	GCSE French Reading F	6
Mon 12 Dec 22	08:30	00:45	GCSE French Reading H	19
Mon 12 Dec 22	08:30	02:00	GCSE History P2	40
Mon 12 Dec 22	08:30	01:05	GCSE Turkish Reading H	53
Mon 12 Dec 22	13:40	02:00	A Level Chemistry - Paper 1	15
Mon 12 Dec 22	13:40	02:15	A Level Geography Y12 Paper 1/2	10
Mon 12 Dec 22	13:40	01:30	App Gen Sci: Unit 4	10
Mon 12 Dec 22	13:40	01:45	AS French Paper 1 Listening	4
Mon 12 Dec 22	13:40	01:30	AS Physics - Paper 1	13
Mon 12 Dec 22	13:40	00:45	GCSE French Reading F	10
Mon 12 Dec 22	13:40	00:45	GCSE French Reading H	19
Mon 12 Dec 22	13:40	02:15	Y12 History - Paper 1	14

Date	Start	Len	Component Title	Cands
Tue 13 Dec 22	08:30	02:00	A Level Psychology - Paper 1	29
Tue 13 Dec 22	08:30	02:00	AS Mathematics Paper 1	37
Tue 13 Dec 22	08:30	01:30	GCSE Geography P2	131
Tue 13 Dec 22	08:30	02:00	GCSE History P2	119
Tue 13 Dec 22	08:30	01:30	L3 Mathematical Studies Paper1	3
Tue 13 Dec 22	13:40	02:00	A Level Biology - Paper 1	19
Tue 13 Dec 22	13:40	01:45	GCSE English Language 1	257
Wed 14 Dec 22	08:30	02:15	A Level Geography Paper 3	6
Wed 14 Dec 22	08:30	01:30	AS Further Maths Paper 1	2
Wed 14 Dec 22	08:30	01:30	AS Sociology P1	9
Wed 14 Dec 22	08:30	02:00	BTEC Business U3 - Personal & Business Finance	18
Wed 14 Dec 22	08:30	01:15	GCSE Comb Sci: Physics F	94
Wed 14 Dec 22	08:30	01:15	GCSE Comb Sci: Physics H	102
Wed 14 Dec 22	08:30	01:45	GCSE Physics H	60
Wed 14 Dec 22	08:30	02:00	Y12 Economics Paper 1	27
Wed 14 Dec 22	13:40	01:20	AS Mathematics Paper 2	37
Wed 14 Dec 22	13:40	01:30	GCSE Maths Paper 3F	137
Wed 14 Dec 22	13:40	01:30	GCSE Maths Paper 3F (Sixth Form)	10
Wed 14 Dec 22	13:40	01:30	GCSE Maths Paper 3H	120
Wed 14 Dec 22	13:40	01:30	L3 Mathematical Studies Paper2	3
Thu 15 Dec 22	08:30	02:00	A Level Psychology - Paper 2	29
Thu 15 Dec 22	08:30	02:30	A Level Turkish Y12 Paper 1	16
Thu 15 Dec 22	08:30	01:00	GCSE Geography P3	131
Thu 15 Dec 22	08:30	01:30	Y12 Computer Science Paper 1	8
Thu 15 Dec 22	13:20	00:45	GCSE Turkish Listening H	53
Fri 16 Dec 22	08:30	02:00	A Level Chemistry - Paper 2	15
Fri 16 Dec 22	08:30	02:15	A Level History - Paper 3 31	5
Fri 16 Dec 22	08:30	01:30	AS French Paper2 Writing	4
Fri 16 Dec 22	08:30	01:30	AS Physics - Paper 2	13
Fri 16 Dec 22	08:30	01:45	Y10 Religion & Life Paper 1/2	264
Fri 16 Dec 22	08:30	01:30	Y12 History - Paper 2	14
Fri 16 Dec 22	13:40	02:00	A Level Biology - Paper 2	19
Fri 16 Dec 22	13:40	00:35	GCSE French Listening F	16
Fri 16 Dec 22	13:40	00:35	GCSE French Listening H	

*Celebrating*  
**SUCCESS** at Edmonton County School  
**EXTRA CURRICULAR ACTIVITIES**



## Stem Club

Are you in year 7 or 8?

Do you want to know  
**EVERYTHING**  
 you possibly can about  
**EVERYTHING?!**

Do you want to have fun  
 with science?  
 Come along!

**LOCATION:**

B211 (Bury) and C146 (Cambridge)

**DAY:**

Every Tuesday

**TIME:**

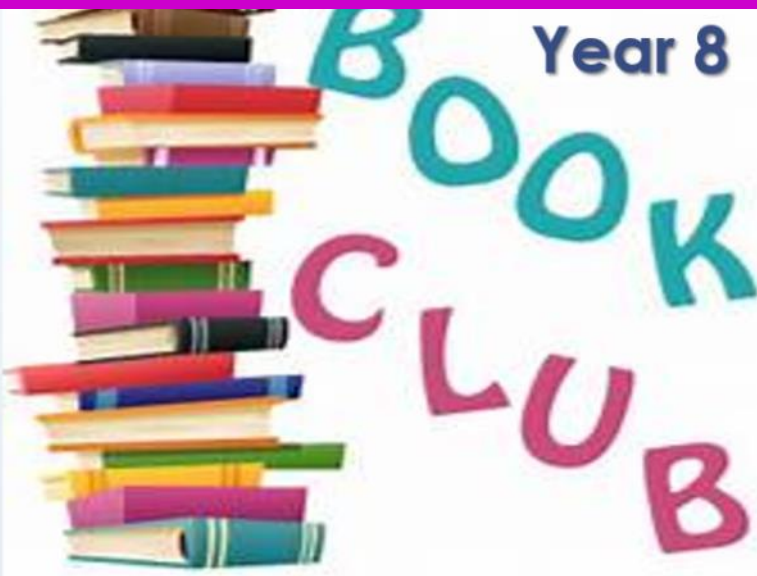
3.10pm – 4.00pm

**SIGN UP:**

Cambridge Ask Ms Ahmed(B209)

Bury Ask Mr Fawehimi (C146)

Starting on 8<sup>th</sup> November 2022



Bring a book and get  
 comfy.  
 Open to all who  
 enjoy reading just for  
 fun.

Starting Monday 7<sup>th</sup>  
 November

Monday B2  
 Thursday B1  
 Room C060- next door to the phase office  
 Please see Mrs. Cope for more details



# LITERACY NEWS

## Firework Night and Macbeth



This weekend is firework night and many of us will be going to watch displays or having parties to add some much needed colour and light to these dark evenings.

Some of us will spend our dark evenings reading and revising Shakespeare's *Macbeth* for our GCSE English exam. But why do we celebrate firework night, who was Guy Fawkes and what has this got to do with *Macbeth*? The Gunpowder Plot was a failed attempt to blow up England's King James I and the Houses of Parliament on November 5, 1605. The plot was organised by Robert Catesby in an effort to end the persecution of Roman Catholics by the English government. Catesby and others hoped to replace the country's Protestant government with Catholic leadership. Around midnight on November 4, 1605, Guy Fawkes was discovered in the cellar of the Parliament building with barrels of gunpowder. Fawkes and other men involved in the plot were tried and executed for treason. Every November 5, the British celebrate Guy Fawkes Day by burning Fawkes in effigy and letting off fireworks!

It is often said *Macbeth* is a comment on the Gunpowder Plot. *Macbeth*'s themes are linked to the revolt: it's a play about treason, the overthrow of a King, and the downfall of his murderers. Even more importantly, King James was commonly believed to be descended from Banquo the thane of Lochquhaber, the historical counterpart of Shakespeare's Banquo, the friend who *Macbeth* betrays and has murdered. The witches' prophecy that Banquo's descendants will be kings is referring to Banquo's descendant James Stuart, King of Scotland and England. It has also been suggested that the escape of Fleance, Banquo's son, from *Macbeth*'s murder plot is designed to echo James's own escape from the Gunpowder Plot and to compliment the House of Stuart as legitimate and truly -descended rulers.



This year, instead of words of the week, we are going back to our roots looking at prefixes, suffixes and the roots of words.

More to come on word roots next week... watch this space!



### Calling staff and students!

Mr Lister and I need staff and some students to record some very short videos.

All you have to do is talk about a book that you love for around 30 seconds. You might include:

- ◆ The title
- ◆ The author
- ◆ The genre
- ◆ A short synopsis
- ◆ Why you like it

These will be used as examples for an exciting new project we have coming up soon!

**Please contact me or Mr Lister for more details!**



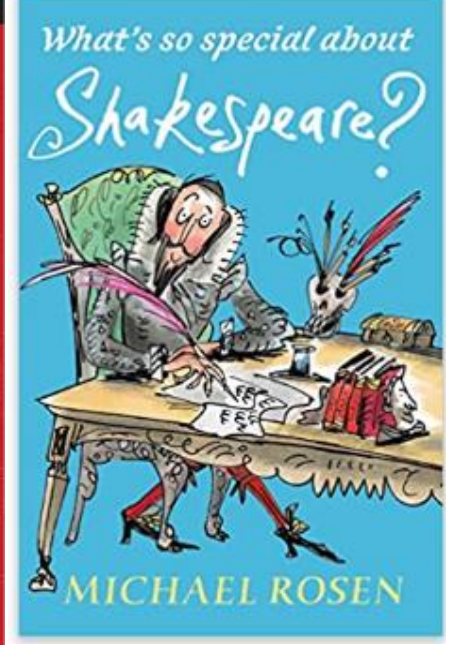
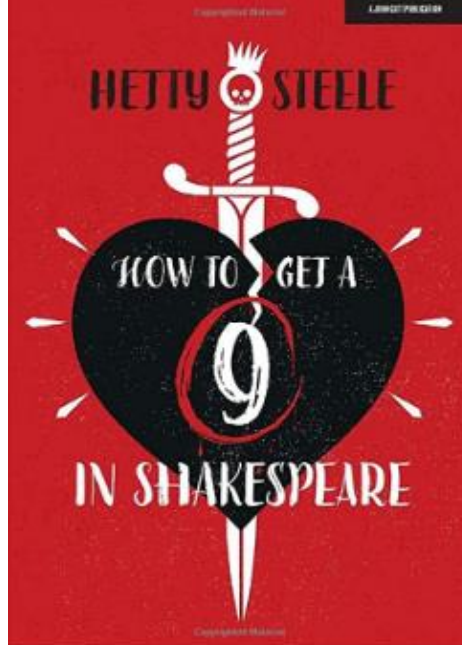
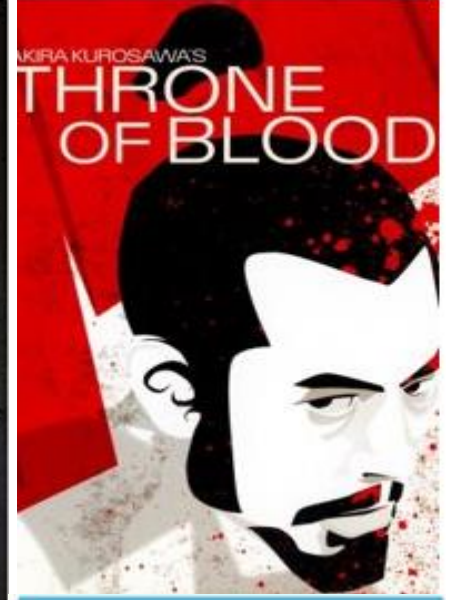
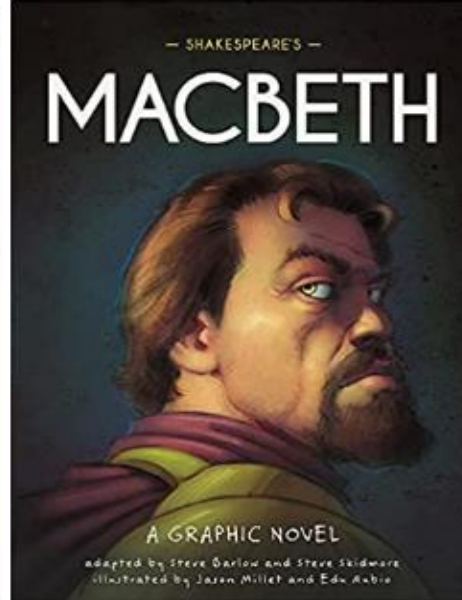
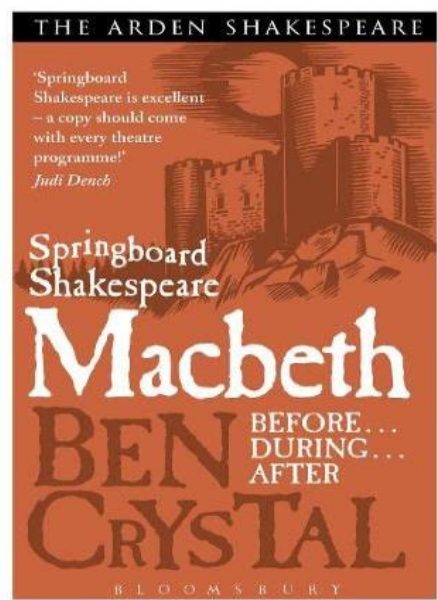
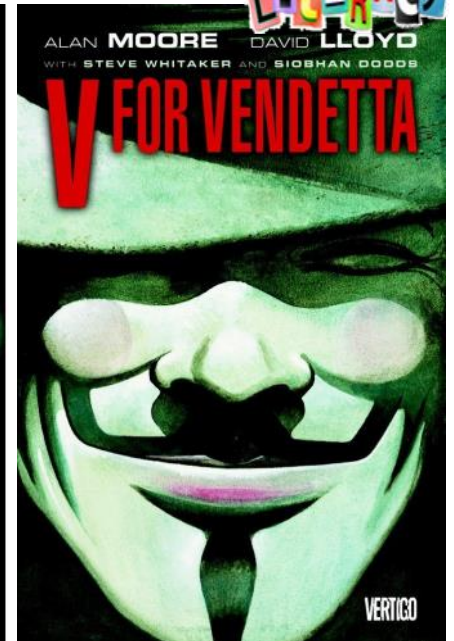
# WIDER READING



OXFORD SCHOOL SHAKESPEARE  
**MACBETH**



WILLIAM SHAKESPEARE





# Accelerated Reader™



## Accelerated Reader Year 7 Top Performing Forms

w/e 14/10/2022

- 1. 7BC - 27,601
- 2. 7BE - 4,041



## Accelerated Reader Year 7 Top Readers

w/e 14/10/2022

- 1. Ecem Erem (7BC) 27,601 words in total
- 2. Ayla Javad (7BE) 4,041 words in total



Increase your word-count by reading and quizzing in school or at home!



## Accelerated Reader Year 8 Top Performing Forms

w/e 14/10/2022

- 1. 538,041 (8BC)
- 2. 437,722 (8BD)
- 3. 90,162 8BE
- 4. 465,948 (8BA)



## Accelerated Reader Year 8 Top Readers

w/e 14/10/2022

- 1. Arseida Buzani 500,733 (8BC)
- 2. Rizwan Muuse Ibraahim 160,061 (8BD)
- 3. Faris Mohammed Ali 120,291 (8BD)
- 4. Muad Ibraahim 111,851 (8BD)
- 5. Jayden Ratray 52,300 (8BE)



Increase your word-count by reading and quizzing in school or at home!



## Accelerated Reader Year 7 Top Performing Forms

w/e 14 October 2022

- ↑ 1. 7C1 – 2,711,581 words in total (+2,711,581 words)
- ↑ 2. 7C2 – 487,508 words in total (+487,508 words)
- ▬ 3. 7C3 - 0 words in total (no change)
- ▬ 4. 7C4 – 0 words in total (no change)
- ▬ 5. 7C5 - 0 words in total (no change)



## Accelerated Reader Year 7 Top Readers

w/e 14 October 2022

- ↑↑ 1. Kaesan Polat (7C1) – 1,572,891 words in total
- ↑ 2. Shaun Ferguson (7C1) – 814,227 words in total
- ↑ 3. Rayhana Emin (7C2) – 487,508 words in total
- ↑ 4. Brianna Ogbale (7C1)- 215,753 words in total
- ↑ 5. James Aggrey-Junior (7C1)- 96,021 words in total



Increase your word-count by reading and quizzing in school or at home!



## Accelerated Reader Year 8 Top Performing Forms

w/c 14 October 2022

- ↑ 1. 8C5 – 404,898 words in total (+404,898 words)
- ↑ 2. 8C4 – 214,365 words in total (+214,365 words)
- ↑ 3. 8C6 – 33,697 words in total (+33,697 words)
- ↑ 4. 8C2 – 15,304 words in total (+15,304 words)
- ▬ 5. 8C1 – 0 words in total (no change)
- ▬ 6. 8C3 – 0 words in total (no change)



## Accelerated Reader Year 8 Top Readers

w/c 14 October 2022

- ↑ 1. Asli Ozhot (8C5) – 268,576 words in total
- ↑ 2. Zainab Cisse Karamogo (8C4) – 214,365 words in total
- ↑ 3. Mehdi Nishat (8C5) – 131,004 words in total
- ↑ 4. Nafisa Alam (8C6) – 33,697 words in total
- ↑ 5. Eesa Dilmohamud (8C2) – 15,304 words in total



Increase your word-count by reading and quizzing in school or at home!

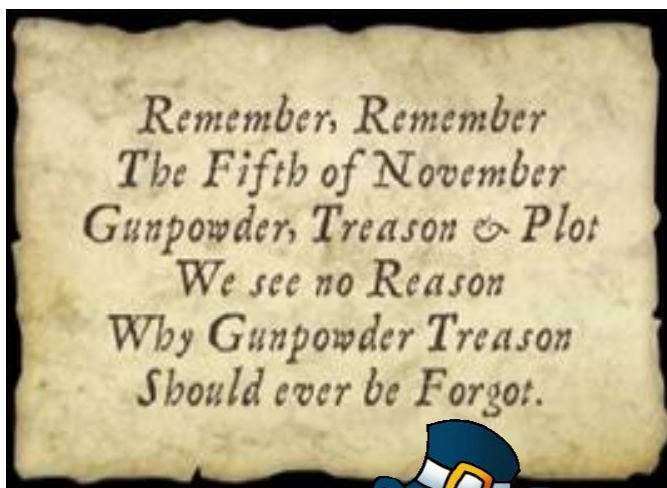
**LITERACY TIP OF THE WEEK**

Teaching and Learning Tip:



How do you know what wider reading to do for different subjects? Wider reading can be a lot of things other than just books. Ask your teacher about:

Articles  
Essays  
Film  
Art  
Exhibitions  
Poetry  
Music  
Biography





Ms L Portelli  
She/her  
Literacy  
Coordinator



# E-books

now available in ECS library!



Use the app on your device:	Use the link on the school website or the computer desktop:
1) Download the ePlatform app on your device 	1) Click on the website/desktop link 
2) Find 'Edmonton County School' and log in with your school email	2) Log in with your school email <small>Log in via Office365</small>
3) Search for books and click 'borrow'. You can now start reading!	3) Search for books and click 'borrow'. You can now start reading!

I am very happy to announce that thanks to Miss Tsolokidou, ECS libraries are now offering E-books! This poster shows the very simple steps you need to take to access this either on a phone, tablet or desktop computer.

For more information about E-books as well as all the other brilliant resources the libraries have to offer, please pop in and have a chat to our lovely librarians!

## Secondary Assemblies – w/c: 11th November 2022

	Bury Campus - Hall	Cambridge Campus - Hall
Monday 7th November	Year 10	Year 10
Tuesday 8th November	Year 11	Year 11
Wednesday 9th November	Year 13	Year 12
Thursday 10th November		
Friday 11th November	Year 11	

### Top Tutor Groups For Attendance W/C 17th October 2022



**8B1 - 98.1%**

**8B4 - 98%**



**Overall Bury Attendance - 94.6%**

**Overall Cambridge Attendance - 92.6%**



### Sixth Form Best Attendance W/C 17th October 2022

**Cambridge - 12A - 99%**

**Bury - 13B - 95.3%**

**Overall Year 12 Attendance - 95.2%**

**Overall Year 13 Attendance - 89.9%**



*Well done and keep up the good work!!*

Progress Lead - Cambridge Campus

